

# IMPROVISATION ON MODAL VAMPS

JEFF ELLWOOD

THIS SHEET WILL FOCUS ON THE Gm7 CHORD

One of the most universal jazz scales is the MINOR PENTATONIC scale.  
the construction of a minor pentatonic is: 1-b3-4-5-b7-1

Gm7



One of the best ways to use the minor pentatonic scale is to be sequential.  
This pattern is 4 scale steps up (starting from each note of the pentatonic scale)



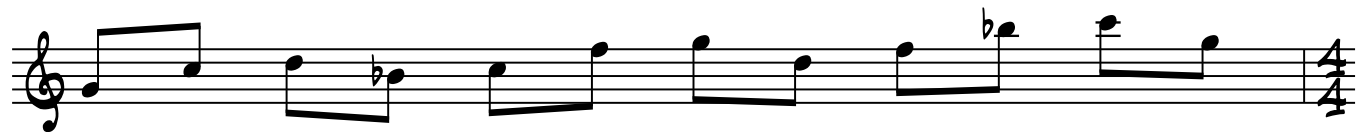
Here is the same scale pattern in an alternating order (1 up, 1 down)



Here is a scale pattern where 1 note is skipped



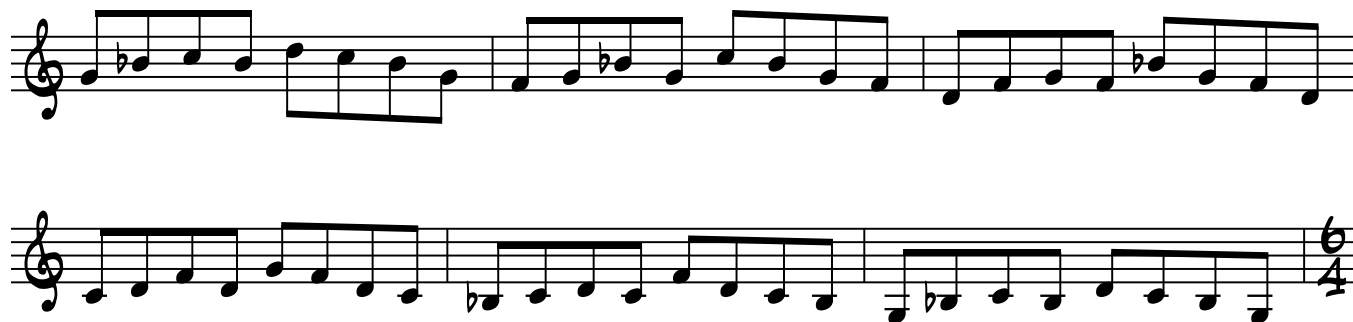
Here is the scale pattern from above in an alternating order (1 up, 1 down)



Here's another pattern (up 3 scale steps, return to starting note)



A more complicated sequence



There are some other pentatonic sounds we can apply over static harmony

Here we are building a minor pentatonic scale from the 5th (Dmi Pent over Gmi)



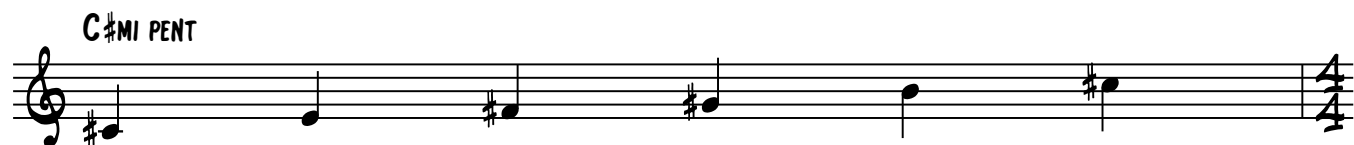
We can also build a minor pentatonic scale from the 2nd (Ami pent over Gmi)



We can also use minor pentatonic scales a 1/2 step above the given key



Another great sound is using the minor pentatonic scale from the tritone (#4 of the given key)



The key to applying these sounds is to take a simple melodic phrase and move it through the key centers

Here is a simple shape (1-b3-4-1) through the 5 key centers

Musical notation in 4/4 time showing a simple melodic shape (1-b3-4-1) across five key centers: Gmi, Dmi, Ami, Abmi, and C#mi. The notes are: Gmi (G, Bb, D), Dmi (D, F, A), Ami (A, C, E), Abmi (Ab, Bb, D), and C#mi (C#, E, G).

A more complicated shape (5-b7-1-5-3-1-4) in the 5 key centers

Musical notation in 4/4 time showing a more complicated melodic shape (5-b7-1-5-3-1-4) across five key centers: Gmi, Dmi, Ami, Abmi, and C#mi. The notes are: Gmi (G, Bb, D, F, A, Bb), Dmi (D, F, A, Bb, C, D), Ami (A, C, E, F, G, A), Abmi (Ab, Bb, D, Eb, F, G), and C#mi (C#, E, G, Ab, B, C#).

Mixing key centers

Musical notation in 4/4 time starting with **Gmi<sup>7</sup>**. The notes are: Gmi (G, Bb, D), Abmi (Ab, Bb, D), and Gmi (G, Bb, D).

Musical notation in 4/4 time starting with **Gmi<sup>7</sup>**. The notes are: Gmi (G, Bb, D), C#mi (C#, E, G), Dmi (D, F, A), Gmi (G, Bb, D), Abmi (Ab, Bb, D), and Gmi (G, Bb, D).

Musical notation in 4/4 time starting with **Gmi<sup>7</sup>**. The notes are: Dmi (D, F, A), Abmi (Ab, Bb, D), Ami (A, C, E), and Gmi (G, Bb, D).

Musical notation in 4/4 time starting with **Fmi<sup>7</sup>**. The notes are: C#mi (C#, E, G), Gmi (G, Bb, D), Abmi (Ab, Bb, D), and Gmi (G, Bb, D).